

# SALES MEMO

13/11/07

## VVS Main Draw Cable Pulleys (GBP)

Through on going development resulting from customer and distributor feedback, the main draw cable configuration on the VVS system has been modified to reduce the complexity of the system and improve its strength and operation performance. The following changes are shown on the attached drawing.

- i) The current 100mm corner draw pulley has been re-developed as a 120mm pulley diameter version. This larger pulley creates less curvature on the cable and thus improves the efficiency of operation. At the same time we have taken the opportunity to strengthen the pulley bracket. This new part (2-P+B120S2) is a direct replacement of the 100mm corner pulley (2-P+B100S2), which is now discontinued.
- ii) The adjustor pulley has been replaced by now incorporating a second hole in the telescopic shaft coupling. This enables the bottom curtain tube to be disconnected from the motor and rotated in increments of 90 degrees without effecting the position of the top tube and thus adjusting the curtain position relative to the ventilation opening. With the removal of the adjustor pulley this also removes the need for a second 100mm corner draw pulley and the additional fixing brackets.

From this point forward (including all un-despatched orders) the following part numbers are discontinued and replaced by:

***Discontinued***

2-P+B100S2

1-PUL100WB

1-WNWB5050

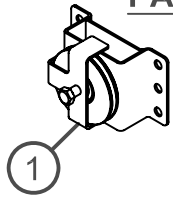
1-BRKL1WW50

***Replaced By***

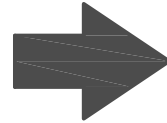
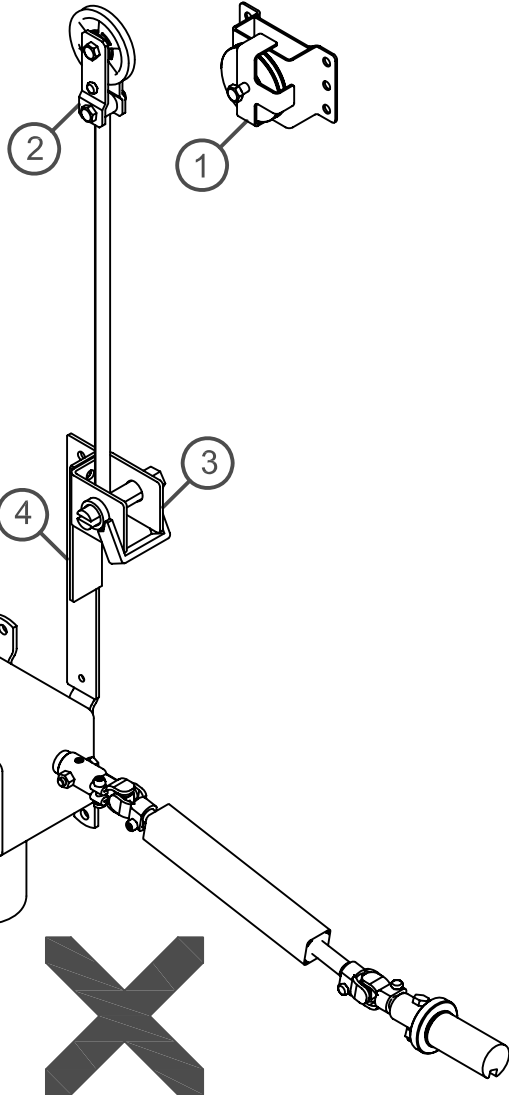
2-P+B120S2

# AMMENDMENT SHEET

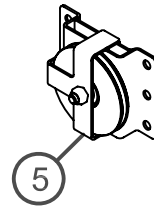
## PARTS DISCONTINUED PER CURTAIN



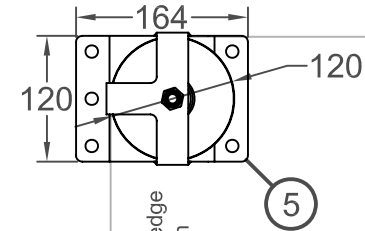
|   | Part No.    | Description              | QTY |
|---|-------------|--------------------------|-----|
| 1 | S-P+B100S2  | Bracket and 100mm Pulley | 2   |
| 2 | S-PUL100WB  | Adjustment Pulley        | 1   |
| 3 | S-WNWB5050  | 50mm Webbing Winch       | 1   |
| 4 | S-BRKL1WW50 | Web Winch Plate Bracket  | 1   |



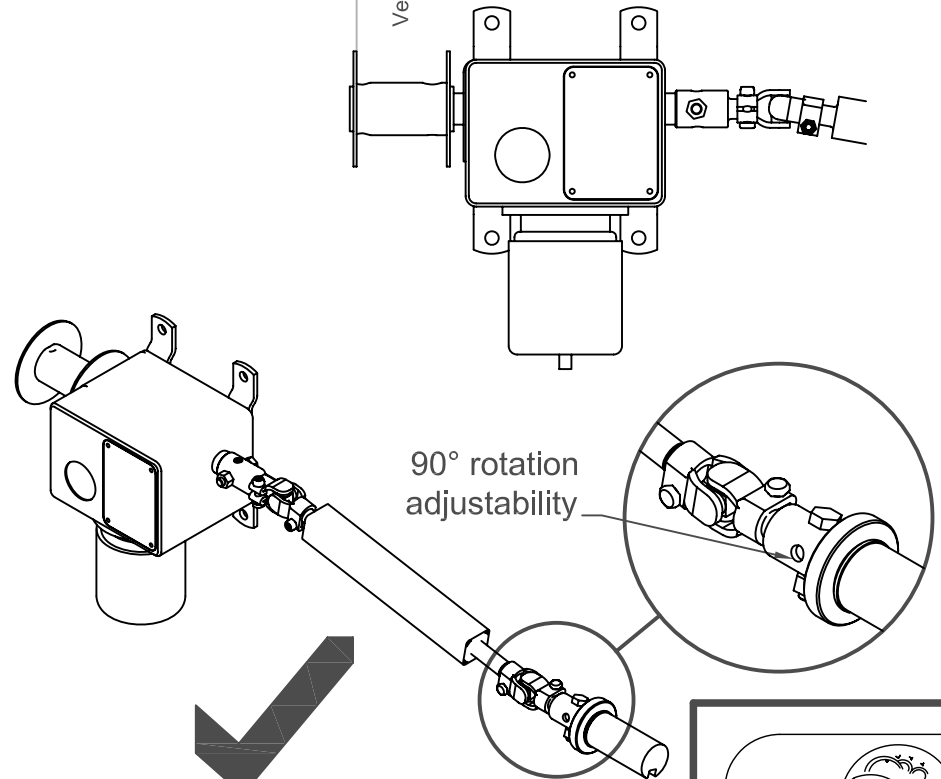
## NEW PARTS PER CURTAIN



|   | Part No.   | Description              | QTY |
|---|------------|--------------------------|-----|
| 5 | S-P+B120S2 | Bracket and 120mm Pulley | 1   |



Vertically above edge  
of cable drum



90° rotation  
adjustability