



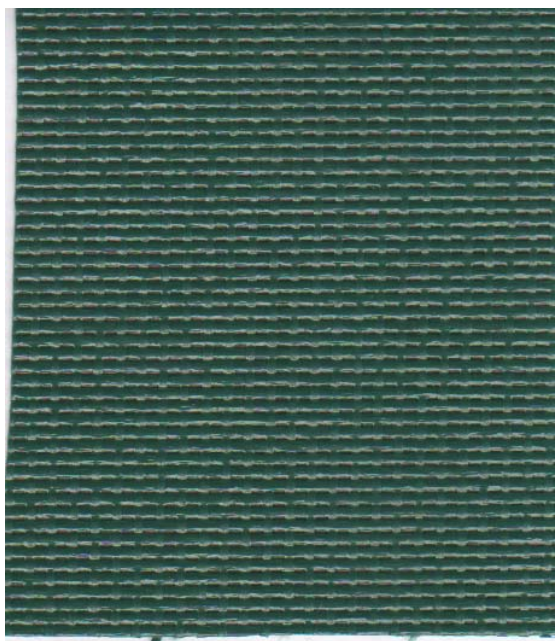
Dated 5-7-2007

Galebreaker Material specifications data sheet

We are pleased to announce with immediate effect a new HP material to replace all existing HP versions. This material has been designed specifically for Galebreaker and will address the large hole and water ingress problems experienced. This new HP remains the same price although it is much stronger in its tear strength.

It will be available in Farmflex in 1m, 1.5m, 2m, 3m from . However it is **only** available as Farmflex in the 3m until further notice. All other products are as normal.

NEW HP MATERIAL (TURBO)



HP Material:

Tensile Strength:	(Almost double in the warp that of the old HP. We mainly tension in the warp)
Warp	10,000 kg/m
Weft	4,000 kg/m
Openess	10%
Wind speed reduction	90%
Weight:	460 g/sqm
Material	PVC coated Polyester
Flame Retardant	B2
Colour	Pantone reference 3305 Nearest RAL reference 6005